

Building Smarter: Transforming Construction Projects with AI-Powered Intelligence

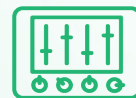
JobPlanner and TrueProject combine forces in a groundbreaking alliance, transforming the construction landscape. Experience the synergy of JobPlanner's streamlined construction management software with TrueProject's predictive intelligence and AI capabilities to improve your projects' health and performance.

Together, they set a new standard in construction project management, enhancing your operational capabilities and strategic foresight.



Comprehensive Capabilities for Complex Projects

- **Comprehensive Project Management:** Keep your project on track with a suite of tools. Manage daily tasks, RFIs, submittals, and meeting minutes, all while ensuring easy access to critical documents.
- **Detailed Job Costing:** Take control of your finances with tools designed for precise job costing. Manage contracts, invoices, budgets, and change orders to keep your project financially sound.
- **Streamlined Preconstruction Processes:** Elevate your bidding processes with preconstruction tools. From bid preparation and qualifications to bid forms and bid leveling, ensure you start strong and stay competitive.



The Command Center for Construction Excellence

- **Proactive Intelligence Hub:** This offering serves as the epicenter of your project's universe, offering a holistic view of your construction landscape.
- **PM Health Dashboard:** Transform how you see and use project data, with analytics that forecast issues before they arise, ensuring you're always ahead.
- **Unmatched Data Integrity:** With statistical analysis of project data, your decisions are informed, precise, and timely.
- **Comprehensive Reporting:** Gain multi-level insights with dashboards and reports that empower stakeholders at all levels for superior strategic planning.



THE AMPLIFIED IMPACT



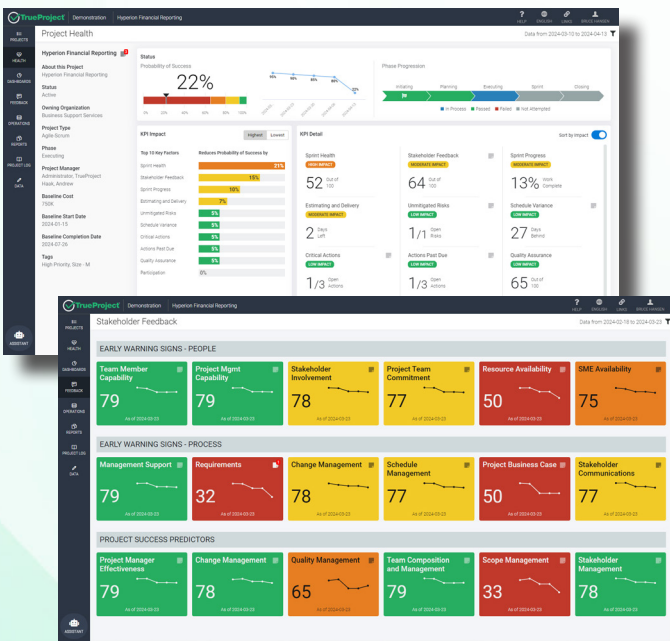
Integrated Project Efficiency: Streamline operations with a unified platform that serves as the nucleus of your project management efforts.



Forward-Thinking Problem Solving: Leverage predictive insights to preemptively tackle potential setbacks, saving time and resources.



Enhanced Operational Visibility: Everyone on your team, from the ground up, is empowered with the information needed to make decisions that align with project goals.



Step into the Future of Construction Project Management...

Elevate your project outcomes with the revolutionary combination of JobPlanner and TrueProject. Visit our website or get in touch to explore how our integrated solutions can transform your next construction project.

To connect with our experts and know more, please reach out to us at:

JobPlanner



www.jobplanner.com



+1 855-385-1954



info@jobplanner.com

TrueProject



www.trueprojectinsight.com



+1 484-430-4989



info@trueprojectinsight.com